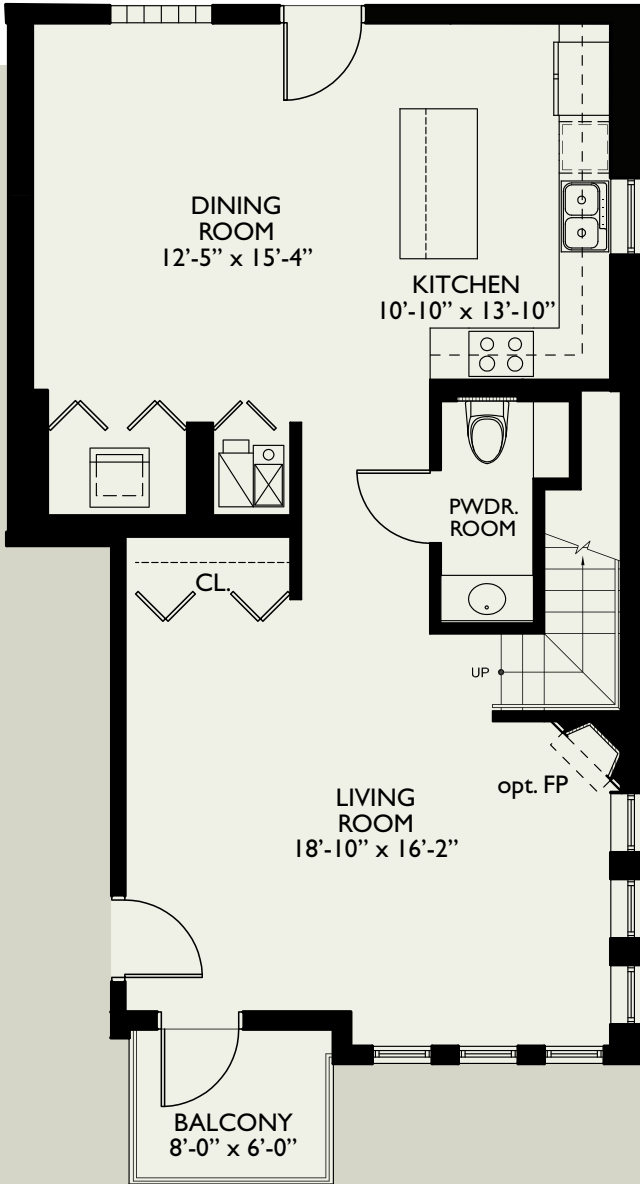


Plan B2.4T

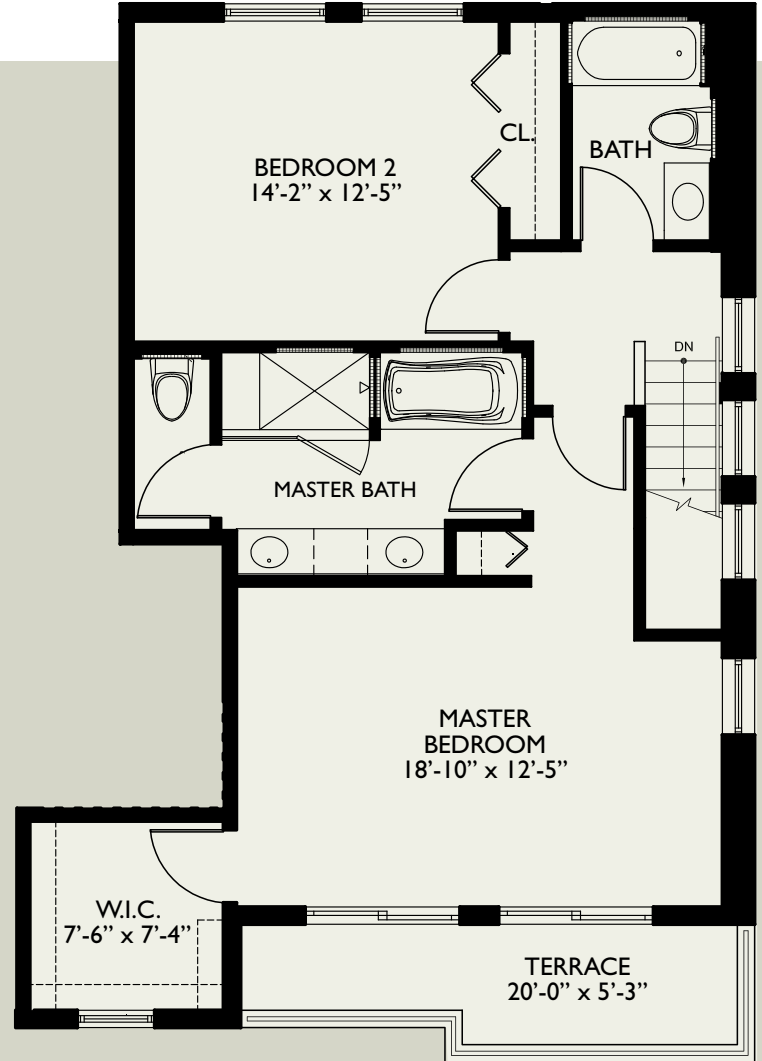
unit 1406

The **Front St**
LOFTS
of Lemont

1,781 sq. ft.



Lower Level



Upper Level



Please note that specifications, equipment, dimensions and prices are subject to change without notice.

*Square Footage does not include balcony/patio.

All dimensions are approximate.

Availability Limited! Call Today!

630.243.6162

102 Stephen Street • Lemont, IL 60439

www.lemontlofts.com web

mdewitt@lemontlofts.com email